

046850
RECEIVED
LARAMIE COUNTY
CHEYENNE, WY.

CERTIFIED LAND CORNER RECORDATION '88 JUL 20 AM 11 30

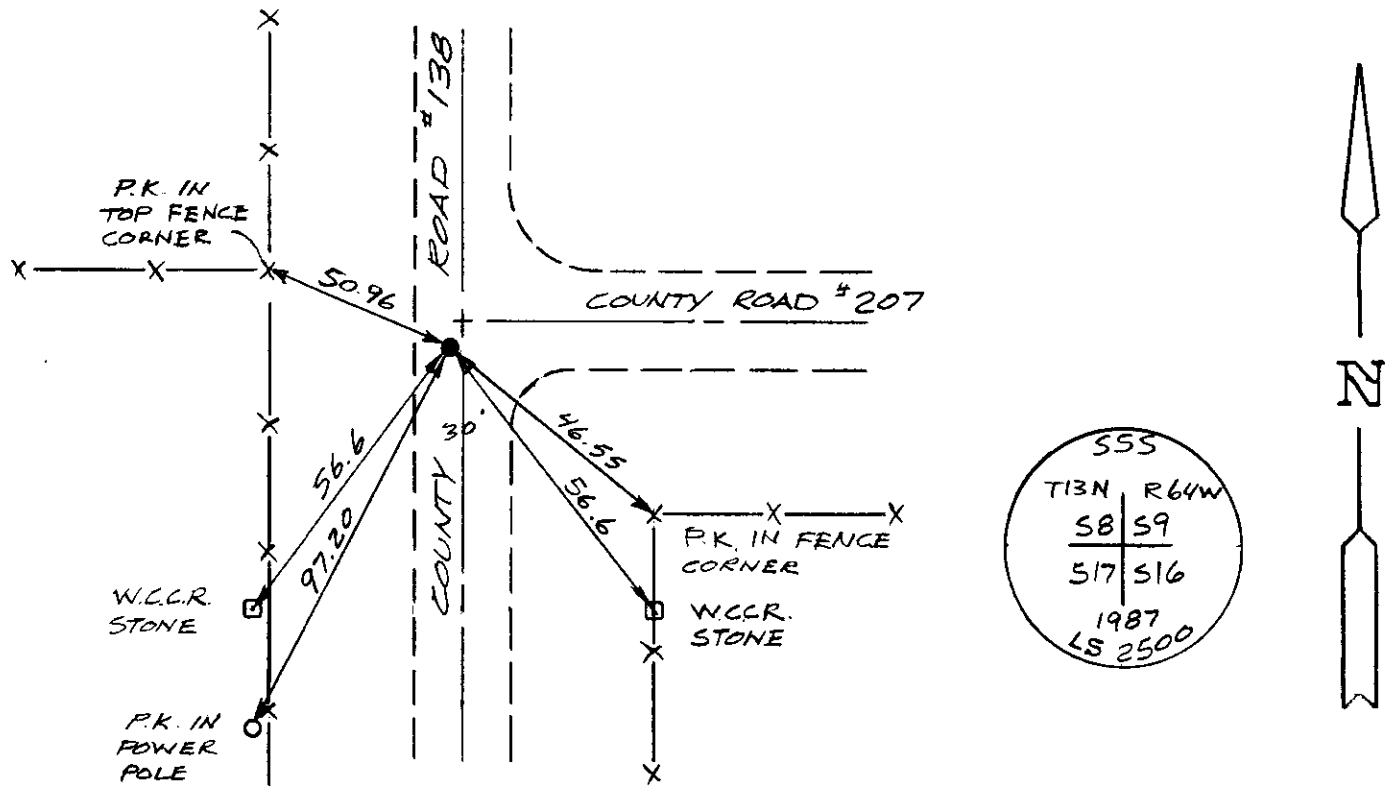
DESCRIPTION OF CORNER EVIDENCE FOUND, AND ORIGINAL RECORD (if known)
Found no evidence of previous monumentation.

S.8 S.9
S.17 S.16
T.13N., R.64W.
6th P.M. G.L.O. Record - Unknown

DESCRIPTION OF MONUMENT AND ACCESSORIES ESTABLISHED
TO PERPETUATE THE ORIGINAL LOCATION OF THIS CORNER:

At the corner: Set 5/8" x 18" rebar with 2" aluminum cap from found W.C.C.R. stones, 2.5' West of center line of County Road # 207 stamped as shown below.
Accessories : See ties below.

SKETCH, WITH COURSE AND DISTANCE TO ADJACENT CORNER IF DETERMINED IN THIS SURVEY.
(May Sketch or Paste Reproduction on Reverse Side.)



I, John A. Steil certify that I have carefully performed or reviewed the work done on the diagrammed corner as reported on this recordation form and approve the same.

John A. Steil L.S. 2500
Signature of Surveyor Registration No.

STATE OF WYOMING,
Office of Clerk and Recorder,
County of Laramie

This "corner record" was filed for record on the 20th day of July, 1988, was noted on the cross-index plat and is assigned page No. _____, in book No. _____

Janet C Whitehead
County Official

Cross Index No.	J-9	T. 13N	R. 64W	Mer.	6th